



DOSHISHA UNIVERSITY

# LEARNING COMMONS

Where Ideas Take Shape

---

How to use the Learning Commons

---

DOSHISHA UNIVERSITY

# LEARNING COMMONS



---

## The Learning Commons

Find inspiration in range of new encounters and collaborate with others to bring new possibilities to life.

The Learning Commons is full of open, flexible spaces that can be adapted to fit a wide variety of needs. Here you can find knowledgeable staff, modern facilities, and state-of-the-art equipment that can help you transform your ideas into reality.

---

### STEP 1



**Encounter  
Something  
New**

Discover knowledge and inspiration through a variety of new encounters with people, technology, information, and other things. First, visit the Learning Commons and take a look around.

### STEP 2



**Talk with  
Others**

Putting your thoughts into words and getting feedback from others is vital to developing any idea. Even a casual conversation among friends can reveal different opinions and perspectives that can spark new connections.

### STEP 3



**Get  
Organized**

Considering different perspectives and gaining an objective view of your idea is key to transforming it into a compelling project. Ask staff members for advice and keep the conversation going as you organize your thoughts into a plan.

### STEP 4



**Take  
Action**

Finally, make it happen! The experience of carrying out a plan or project is crucial to the learning process. With some careful preparation, this will be a great source of confidence for your next challenge.

# 2F Creative Commons

The Creative Commons is designed to facilitate learning through communication and collaboration. Here, students can encounter people, technology, information, and other things that can inspire them to explore new fields.



Reservations required    Application form required    Capacity   <> Area Staff

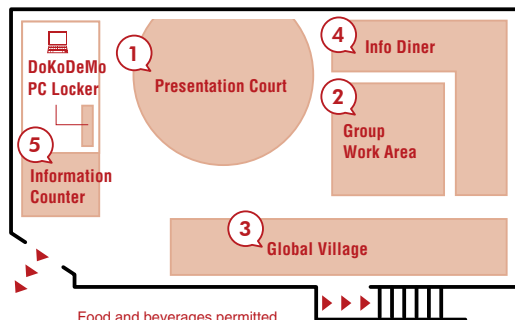
1

## Presentation Court

approx. 100 people

※Open to students as a study space when not reserved for other purposes.

The Presentation Court represents the core design concept of the Learning Commons. This open, flexible event space can easily be configured to suit a wide variety of events that engage not only participants but also catch the interest of those passing by. For example, seating can be arranged for a lecture, or the grid of ceiling mounted tracks can be used to display posters for a poster session or exhibit.



Food and beverages permitted



2

## Group Work Area

Move and combine the tables to suit your group's needs. Brainstorm in a large group, break into smaller groups for different tasks, or make space to spread out large sheets of paper.

You can also hold small seminars for up to a dozen people or use the projectors and ceiling mounted tracks to hold a poster session. The tatami-covered benches can be used separately, combined around a table, or even become a stage to showcase Japanese flower arrangement, a tea ceremony, or a traditional dance performance.



3

## Global Village

A space where Japanese and international students can meet and get to know each other. Take a seat at the table or high counter facing the walkway and enjoy international exchange in different languages. (Just remember, no Japanese allowed.)

Thinking of studying abroad? Meet with a knowledgeable Study Abroad Coordinator or Go Global Assistant to ask questions and get advice.

<Study Abroad Coordinator, Go Global Assistant>



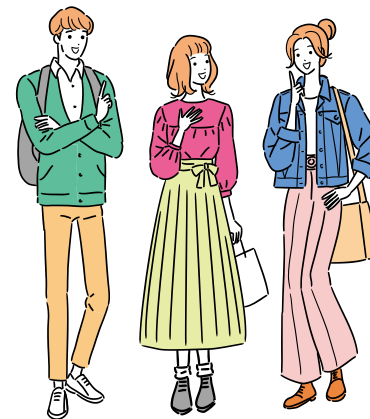
4

## Info Diner

16 Booths (6 people per booth)

※Same-day reservation available

With booth seats like you might find at a family-style restaurant, the relaxed setting of the Info Diner is great for group work. Collaborate efficiently by writing ideas on the whiteboard while simultaneously displaying images with the projector, or use a booth with a display screen to share content from your computer.



5

## Information Counter

Come here to make reservations for different areas or borrow and return equipment. The Learning Support Coordinators can offer all sorts of advice about how to use the different areas of the Learning Commons.

<Information Counter Staff, Learning Support Coordinators>



At the laptop self-checkout locker (DoKoDeMoPC Locker), you can use your student ID card to borrow and return a computer (DoKoDeMoPC) to use inside the Learning Commons.



# 3F Research Commons

The Research Commons is designed as a space for students to develop and hone their academic skills. Build your skills by planning and implementing your ideas and projects with support from staff who have specialized knowledge in their fields.



2

## Group Study Rooms

7 Rooms (14 people per room)

※Same-day reservation available

Use one room when meeting in a small group or combine rooms to accommodate more people by moving the string curtains. Equipped with whiteboards and electronic blackboards, these rooms are great for staying focused when collaborating as a group.



3

## Workshop Rooms

2 Rooms (24 people/ ①, 28 people/②)

※Open to students as a study space when not reserved for other purposes.

For your next workshop, consider Room ①, a closed studio-style space with clear glass walls, or Room ②, an open space with lots of natural light. These rooms are also regularly used to hold workshops on various academic skills. Use the HD cameras, microphones, and chroma key available in Room ① to transform it into a simple recording studio.



①



4

## Print Station

A one-stop shop for all your printing needs. In addition to regular copies, you can print large posters, flyers, and name cards, or create laminated items, bound booklets, custom t-shirts, and novelty goods. Need some design advice? The Print Station Staff is here to help! (\* Printing and other services are provided for a fee.)

<Print Station Staff>



5

## Multimedia Lounge

Acquire new technical skills as you edit and process images and videos using a full suite of programs. The staff is always ready to help, so don't hesitate to ask questions.

<Multimedia Lounge Staff>

There are on-demand printers (DoKoDeMo Printer) in the Learning Commons, and printouts are available.



6

## Open computer lab (PC Corner)

Desktop PCs are available for working on reports and viewing references and databases.



Reservations required



Application form required

○ Capacity

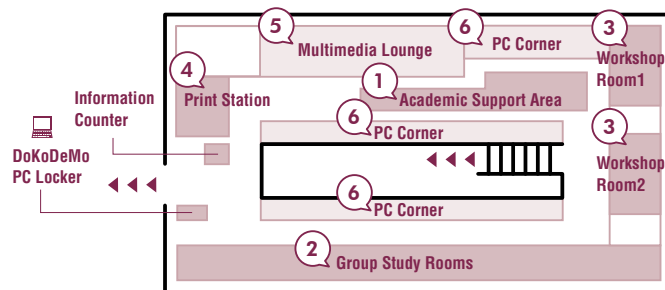
<> Area Staff

1

## Academic Support Area

Faculty, Academic Instructors, and Learning Assistants (LA) are ready to answer your questions and guide you through writing reports, doing research, making presentations, finding references, and other academic tasks. Get advice from an expert! Whether on your own or in a group, feel free to come here for help.

<Faculty, Academic Instructors, LA>



①~④ : Beverages permitted (no food allowed)

⑤⑥ : No food or beverages allowed

# 1F 1F Creative Commons/ Research Commons

"Knowledge wakes up here" at the Learned Memorial Library Learning Commons. Discover new encounters and inspiration in the Creative Commons area, or get the academic support you need to organize your ideas and put them into action in the Research Commons area.



Reservations required Application form required Capacity <> Area Staff

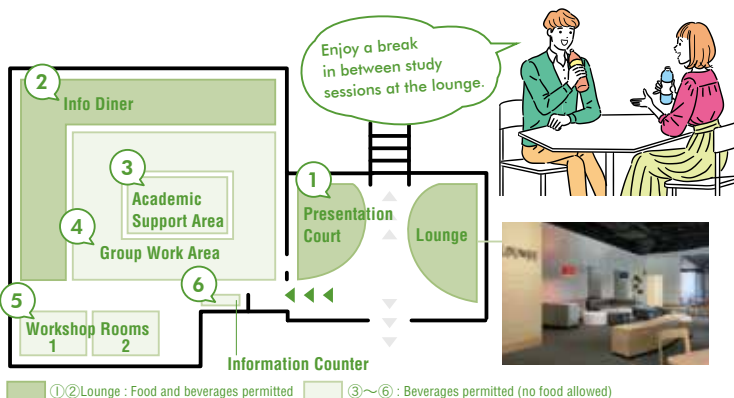
1

## Presentation Court

approx. 70 people

※Open to students as a study space when not reserved for other purposes.

Located to the left of the library entrance, the Presentation Court is an adaptable space where events can engage not only participants but also can catch the interest of those passing by. Use the ceiling mounted tracks to display posters for a poster session or exhibit or rearrange seating and use the wide screen for a lecture or presentation.



2

## Info Diner

17 Booths (4-6 people per booth)   
※Same-day reservation available

With booth seats, whiteboards, display screens (some with electronic blackboard functionality), and adjustable tables, the relaxed setting of the Info Diner is great for group work. Collaborate efficiently by writing out ideas on the whiteboard or sharing content from your computer on a display screen.



3

## Academic Support Area

Faculty, Academic Instructors, and Learning Assistants (LA) are ready to answer your questions and guide you through report writing, research, mathematics, programing, specialized coursework for different majors, and more. Get advice from an expert! Whether on your own or in a group, feel free to come here for help.

<Faculty, Academic Instructors, LA>



4

## Group Work Area

Move and combine the tables to suit your group's needs. Brainstorm in a large group, break into smaller groups for different tasks, or make space to spread out large sheets of paper. You can also hold small seminars for up to a dozen people or use the projectors and ceiling mounted tracks to hold a poster session. Rearrange the Layout of the tatami-covered benches for different purposes.



5

## Workshop Rooms

2 Rooms (8 people/ room, max. 18 people when combined)

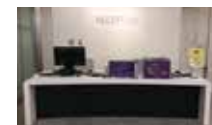
※Open to students as a study space when not reserved for other purposes.

The clear glass walls create an open atmosphere for workshops and study sessions. Remove the partition wall to combine the rooms for a larger space.

6

## Information Counter

Come here to make reservations for different areas or borrow and return computers and other equipment. <Information Counter Staff>





- I want to check the hours of the Learning Commons
- I want to find information on seminars and events being held at the Learning Commons

Please check the Learning Commons homepage for the latest information.

Visit the website to check the calendar, event information, and urgent announcements including irregular hours or closures.

#### Learning Commons Website:

<https://ryoshinkan-lc.doshisha.ac.jp/en/>

You can also access the reservation site for seminars and events via the site above.



- I have questions about studying and learning at the university
- I don't know how to write a report
- I don't know how to give a presentation
- I want to rehearse a presentation and receive some feedback

#### Academic Support Area

Staff stationed in the Academic Support Area are ready to answer all sorts of questions related to studying and academics. Feel free to come and ask!

## What should I do when...?

# Q & A



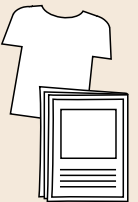
- I want to reserve an area for a group study session.
- I want to hold a presentation, lecture, poster session or other event

Visit the Information Counter.

You can reserve an area based on the intended use of the space and number of participants. If you are not sure which area would be best, just ask the staff for their advice.



- I want to make a booklet of papers for my seminar.
- I want to print out flyers, or make customized t-shirts.



#### Ryoshinkan Learning Commons (3F) Print Station

Staff with expert knowledge and experience are ready to help.



I want to edit images or video



At the Multimedia Lounge in Ryoshinkan Learning Commons (3F, Imadegawa Campus), you can create a variety of multimedia content using the latest equipment. (At Kyotanabe Campus, you can use the Multimedia Lounge on the ground floor of Doshisha Rohm Plaza.)

Visit the site below for details on how to make a reservation and for information about the equipment and facilities available in each area. You can check the availability of each area in real time, too.

<http://sakura.doshisha.ac.jp/>



Visit the website below for detailed rules for use and the reservation forms for each area.

Home > Facilities & Floor Maps > Usage Guide

<https://ryoshinkan-lc.doshisha.ac.jp/en/usage/rule.html>





Ryoshinkan Learning Commons  
(Imadegawa)



Learned Memorial Library Learning Commons  
(Kyotanabe)

DOSHISHA UNIVERSITY  
**LEARNING  
COMMONS**